

# 25484

Webster

679 field loc. by BUNKER & LUDVIGSON

Name: TOWN OF Callender

Loc: T87N - R30W - Sec. 12 SWNE NESW

Topo Elev. = 1149'

Contr: VARNER Well Co

Date: April-May 1979

T.D.: 2050'

T $\frac{1}{2}$ ' GOWRIE QUAD

Bedrock: 170

422136N-0941734-01

CSg } 12 $\frac{1}{4}$ " hole to 1728'  
8" casing ID to 1728' T87-30W-12 CAAC  
7 $\frac{3}{4}$ " open hole to TD

File Loc: PL9-826-827-828-829-830

# VARNER WELL AND PUMP CO. *Established 1906*

WATER WELLS - DEEP WELL PUMPS - WELL REPAIRS - SOUNDINGS

*Contractors*\_\_\_\_\_

TELEPHONE: AREA CODE 319 583-8226  
P. O. BOX 237-121 E. 4TH STREET  
DUBUQUE, IOWA 52001

January 28, 1980

Iowa Geological Survey  
123 North Capitol Street  
Iowa City, Iowa 52242

ATTN: Paul Horick

Dear Paul:

Enclosed please find the test pumping results from the recently drilled well for the City of Callender, Iowa.

The casing records are as follows: 14" casing from surface to 135' and 8" casing from surface to 1728'.

Trusting this will meet with your attention, we remain,

Yours truly,

VARNER WELL AND PUMP COMPANY

*Terry Nauman*  
Terry Nauman, E.I.T. *kt*

TN/kt  
Enclosures



(DISTRIBUTORS OF PEERLESS PUMPS)

**VARNER WELL & PUMP CO.**  
DUBUQUE, IOWA

## WELL TEST DATA SHEET

Job Callender, Iowa

Date tested May 24, 1979

Location City Well #2

Tested by Varner Well and Pump--Tewell

Dia. of well 8"

Pump used: Driver 1091 International

Depth of well 2050'

Column and shaft 4" x 1"

Length of airline 360'

Bowls 20-stage

Non-pumping level 221'

Manufacturer Peerless

Orifice size 4" flowmeter

Serial No. \_\_\_\_\_

TIME	PIZOMETER READING (IN.)	G. P. M.	AIR GAUGE READING (FEET)	PUMPING LEVEL	DRAWDOWN	DISCH. PRESSURE		TOTAL PUMPING HEAD	TEMP.	REMARKS
						LBS.	FEET			
	0	0			0		0			START OF TEST
10:45		250	288	288	48					
10:55		250	295	295	55					
11:05		230	296	296	56					
11:15		240	296	296	56					
11:25		240	296	296	56					
11:35		240	296	296	56					
11:45		240	296	296	56					
12:15		240	296	296	56					
12:45		240	296	296	56					
1:15		240	296	296	56					
1:45		240	296	296	56					
2:15		240	296	296	56					
2:45		240	296	296	56					
3:15		240	296	296	56					
3:45		240	296	296	56					
4:15		240	296	296	56					
4:45		240	296	296	56					
5:15		240	296	296	56					
5:45		240	296	296	56					
6:15		240	296	296	56					
6:45		240	296	296	56					
7:15		240	296	296	56					
7:45		240	296	296	56					
8:15		240	296	296	56					

Continued

**WARNER WELL & PUMP CO.**  
DUBUQUE, IOWA

## WELL TEST DATA SHEET

Job Callender, Iowa

Date tested \_\_\_\_\_

Location City Well #2

Tested by \_\_\_\_\_

Dia. of well \_\_\_\_\_

Pump used: Driver

Depth of well \_\_\_\_\_

Column and shaft \_\_\_\_\_

Length of airline \_\_\_\_\_

Bowls \_\_\_\_\_

Non-pumping level \_\_\_\_\_

Manufacturer \_\_\_\_\_

Orifice size \_\_\_\_\_

Serial No. \_\_\_\_\_

TIME	PIZOMETER READING (IN.)	G. P. M.	AIR GAUGE READING (FEET)	PUMPING LEVEL	DRAWDOWN	DISCH. PRESSURE		TOTAL PUMPING HEAD	TEMP.	REMARKS
						LBS.	FEET			
	○	○			○		○			START OF TEST
8:45		240	296	296	56					
9:15		240	296	296	56					
9:45		240	296	296	56					
10:15		240	296	296	56					
10:45		240	294	294	54					
11:15		240	294	294	54					
11:45		240	296	296	56					
12:15		240	296	296	56					
12:45		240	296	296	56					
1:15		240	296	296	56					
1:45		240	296	296	56					
2:15		240	296	296	56					
2:45		240	296	296	56					
3:15		240	296	296	56					
3:45		240	296	296	56					
4:15		240	296	296	56					
4:45		240	296	296	56					
5:15		240	296	296	56					
5:45		240	296	296	56					
6:15		240	296	296	56					
6:45		240	296	296	56					
7:15		240	296	296	56					
7:45		240	296	296	56					
8:15		240	296	296	56					
Continued										



Callender Jordan.

Field Located 6-5-79

Bunker Ludwigson

T87N - R30W - Sec 12 SWNENESW

Elev 1150

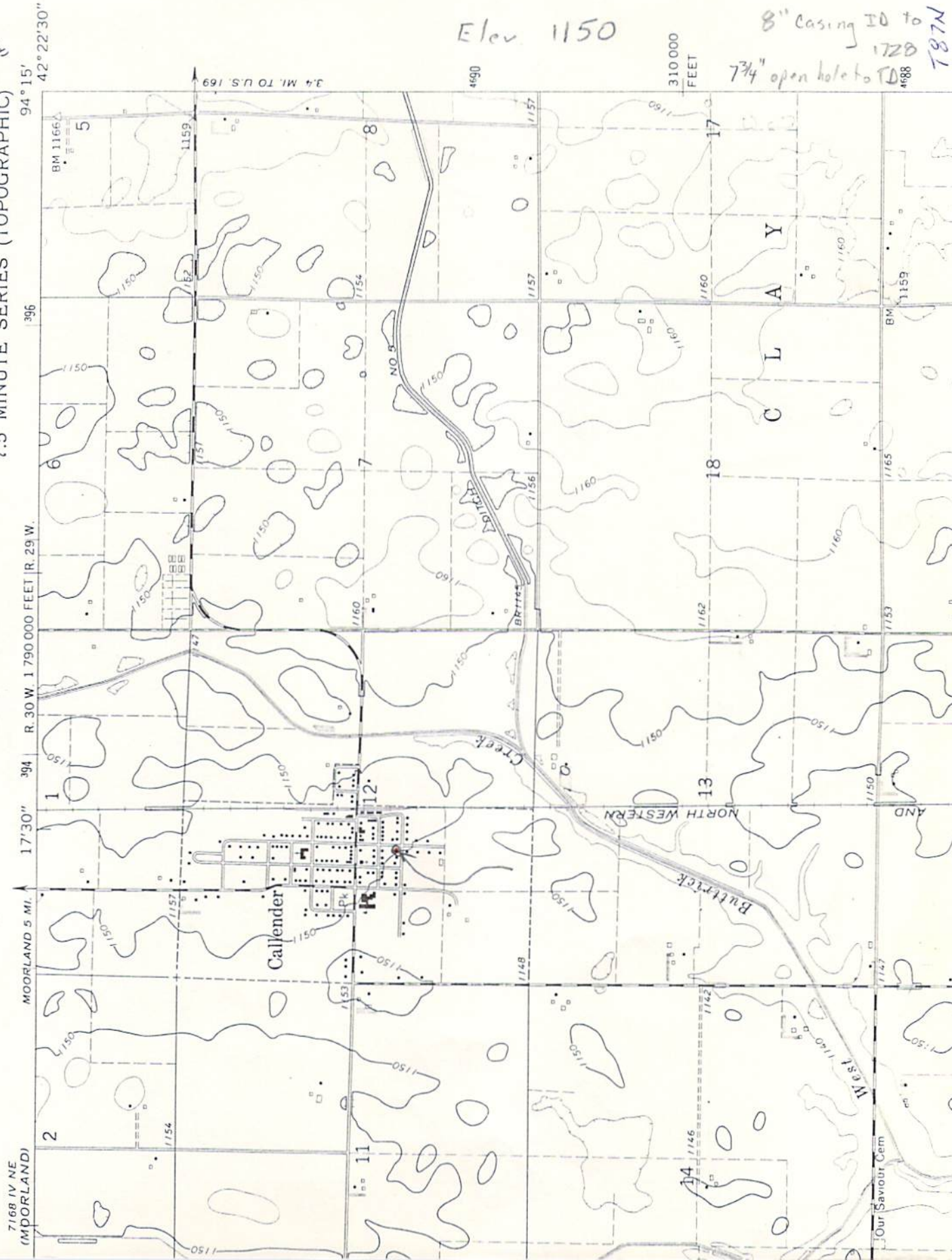
12 1/4" hole to 1728

8" casing ID to 1728

7 3/4" open hole to 1728

7168 NW (SOUTH)  
FORT DODGE SOUTH

GOWRIE QUADRANGLE  
IOWA - WEBSTER CO.  
7.5 MINUTE SERIES (TOPOGRAPHIC)



Our Saviour Cem

Gallendar Town Well

Loc: ~~NE SW NE SW~~ 12-87N-30W  
SW NE NE SW

Elev. Topo 1149'

CAAC



5-14-79

Based on the driller log, and an analysis of cuttings, I have concluded that the base of the St. Peter Limestone in the Callender City well being drilled by Varner Well Co is at about 1677-1678 feet

Michael J. Bork