

# Maximum Loess Thickness of Western Iowa

## COMPILATION MAPPING FOR THE QUATERNARY GEOLOGY OF IOWA Phase 1: Loess Thickness Mapping of Western Iowa

Iowa Geological Survey  
Open File Map OFM-09-08  
June 2009

prepared by

Chad Goings, Rochelle Galer, Stephanie Tassier-Surine, Deborah Quade,  
E. Arthur Bettis III, and James Gigliano

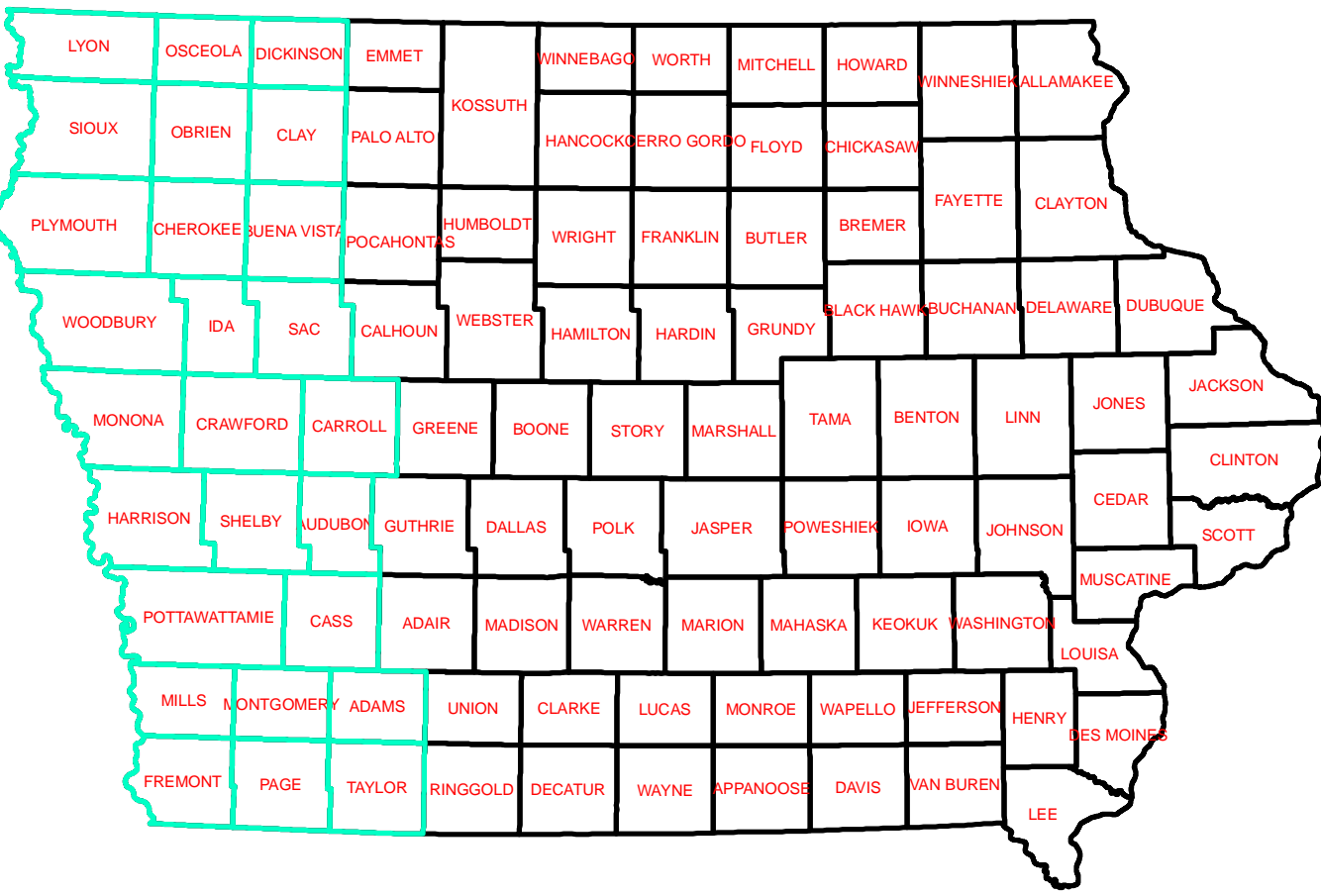
Iowa Geological Survey, Iowa City, Iowa



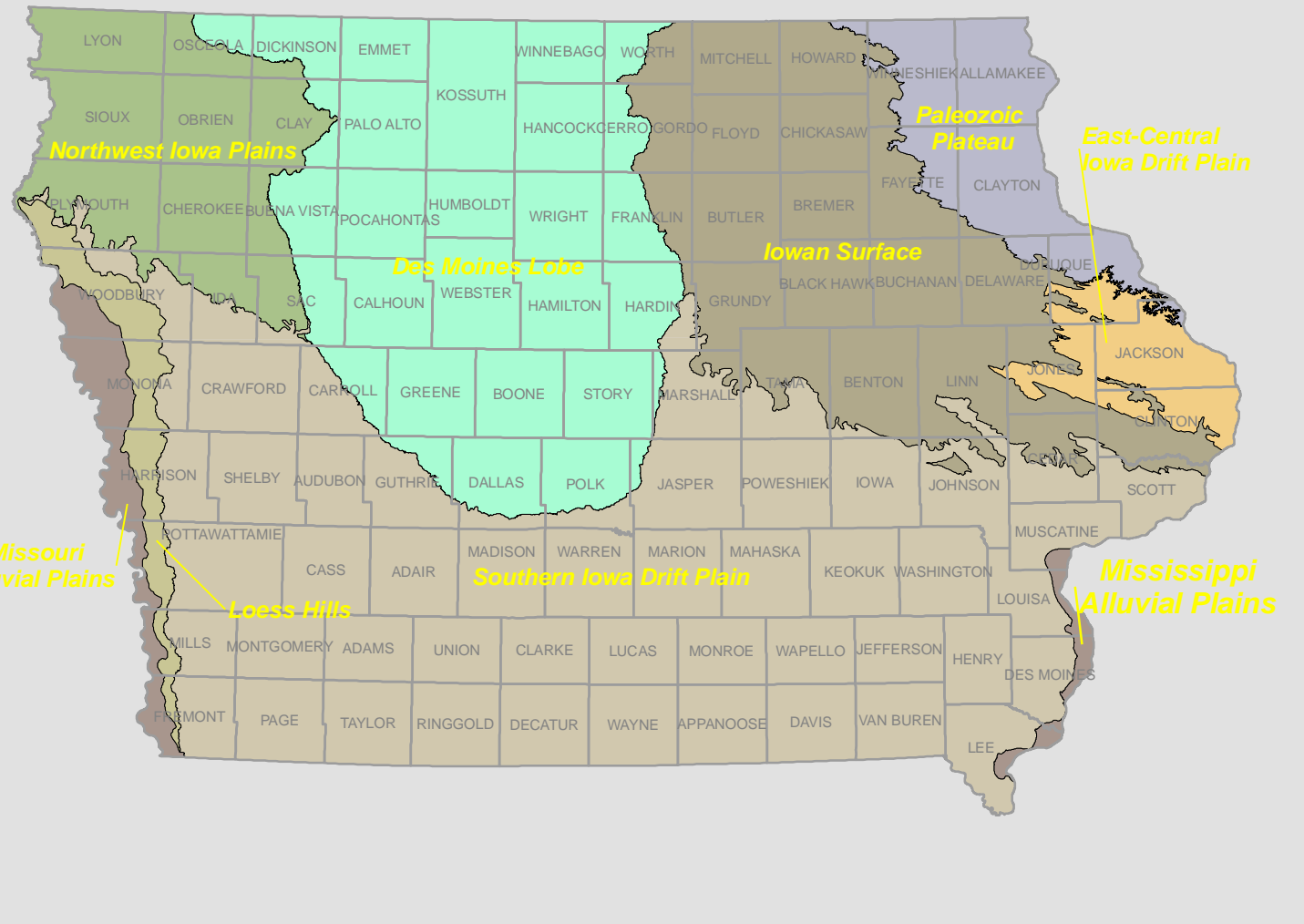
Iowa Department of Natural Resources, Richard A. Leopold, Director  
Iowa Geological Survey, Robert D. Libra, State Geologist

Supported in part by the U.S. Geological Survey  
Cooperative Agreement Number 08HQAG0082  
National Cooperative Geologic Mapping Program (STATEMAP)

### Location Map



### Landform Regions of Iowa



### Loess Thickness in the Midcontinent

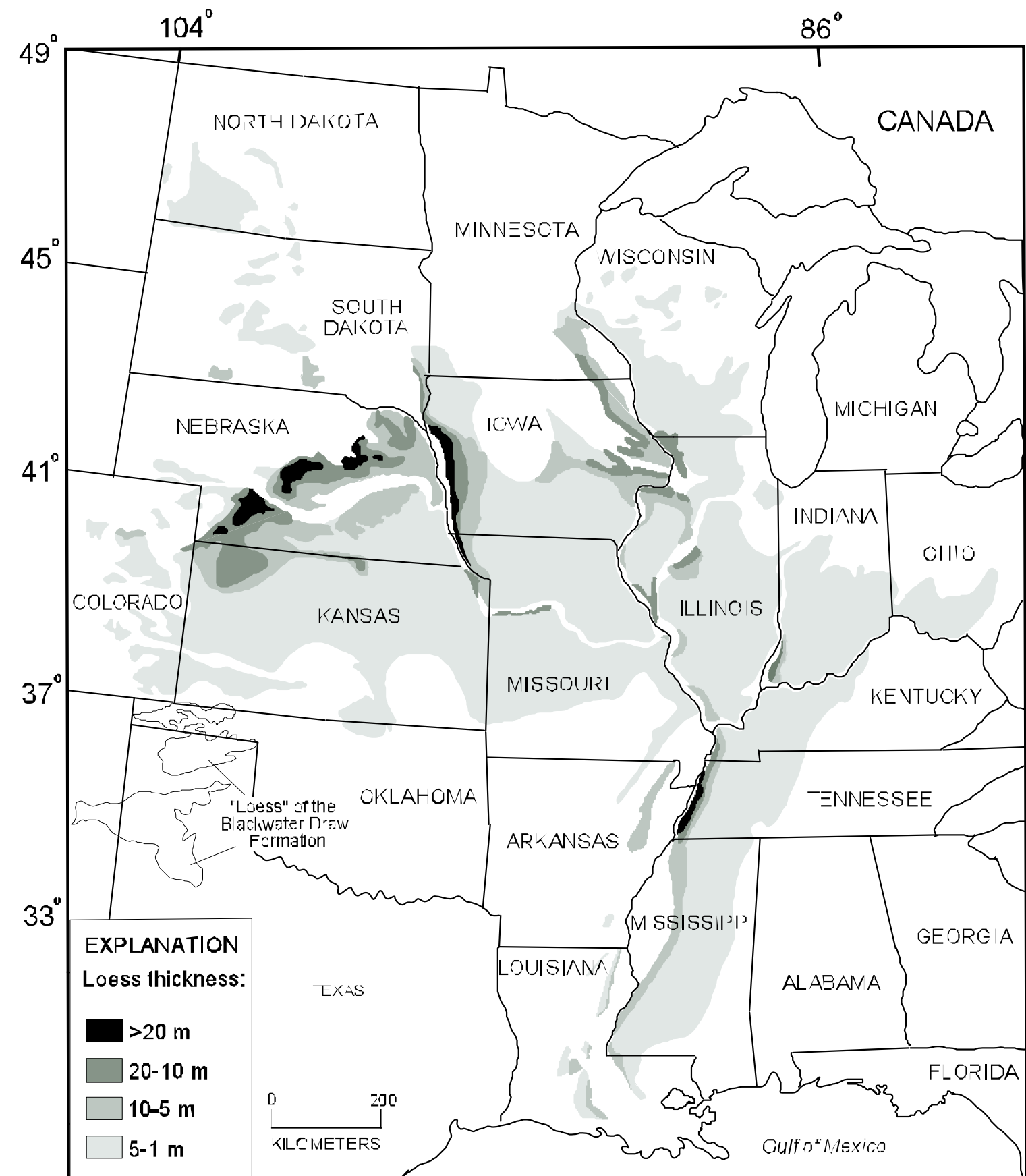
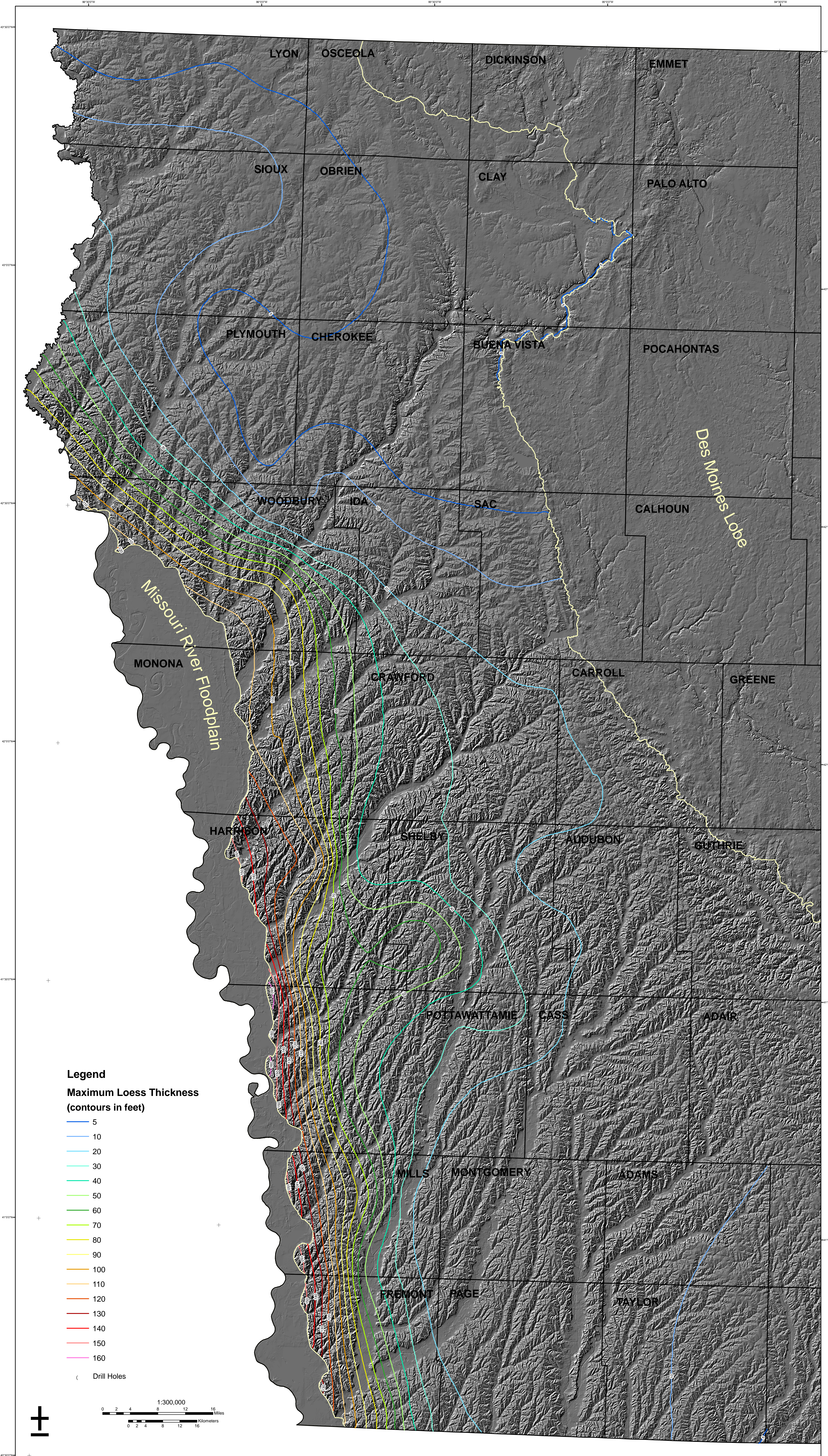


Figure 1 in: D.R. Muhs, E.A. Bettis III, J.N. Altemikoff, J.P. McGeochin, J. Beann, G. Skipp, B.D. Marshall, H.M. Roberts, W.C. Johnson, and R. Benton. 2008. Origin and paleoclimatic significance of late Quaternary loess in Nebraska: Evidence from stratigraphy, chronology, sedimentology and geochemistry. Geological Society of America Bulletin 120:1378-1407.



### Legend Maximum Loess Thickness (contours in feet)

- 5
  - 10
  - 20
  - 30
  - 40
  - 50
  - 60
  - 70
  - 80
  - 90
  - 100
  - 110
  - 120
  - 130
  - 140
  - 150
  - 160
- Drill Holes

